

USB DRIVER INSTALLATION INSTRUCTIONS

Windows 2000/xp/2003 Server/Vista (x86, x64)

1. Run the file “CP210x_VCP_Win2K_XP_S2K3.exe” found on the disk or download it from:

<https://www.silabs.com/products/mcu/Pages/USBtoUARTBridgeVCPDrivers.aspx>

choosing the VCP Driver kit for your operating system.

CP210x USB to UART Bridge VCP Drivers

The CP210x USB to UART Bridge Virtual COM Port (VCP) drivers are required for device operation as a Virtual COM Port to facilitate host communication with [CP210x](#) products. These devices can also interface to a host using the [USBXpress](#) direct access driver.

Download for Windows 2000/XP/Server 2003/Vista (v5.30)

The CP210x Manufacturing DLL and Runtime DLL have been updated and must be used with v5.0 and later of the CP210x Windows VCP Driver. Application Note Software downloads affected are AN144SW.zip, AN197SW.zip, AN205SW.zip and AN223SW.zip.

→ [VCP Driver Kit](#)

→ [Revision History](#)

→ USB Driver Installation Utility Application Note, [AN335](#)

→ USB Driver Installation Utility Software, [AN335SW](#)

Download for Macintosh OSX

→ [VCP Driver Kit](#)

→ [Revision History](#)

Download for Linux (2.6.x and 2.4.36)

→ [VCP Driver Kit](#)

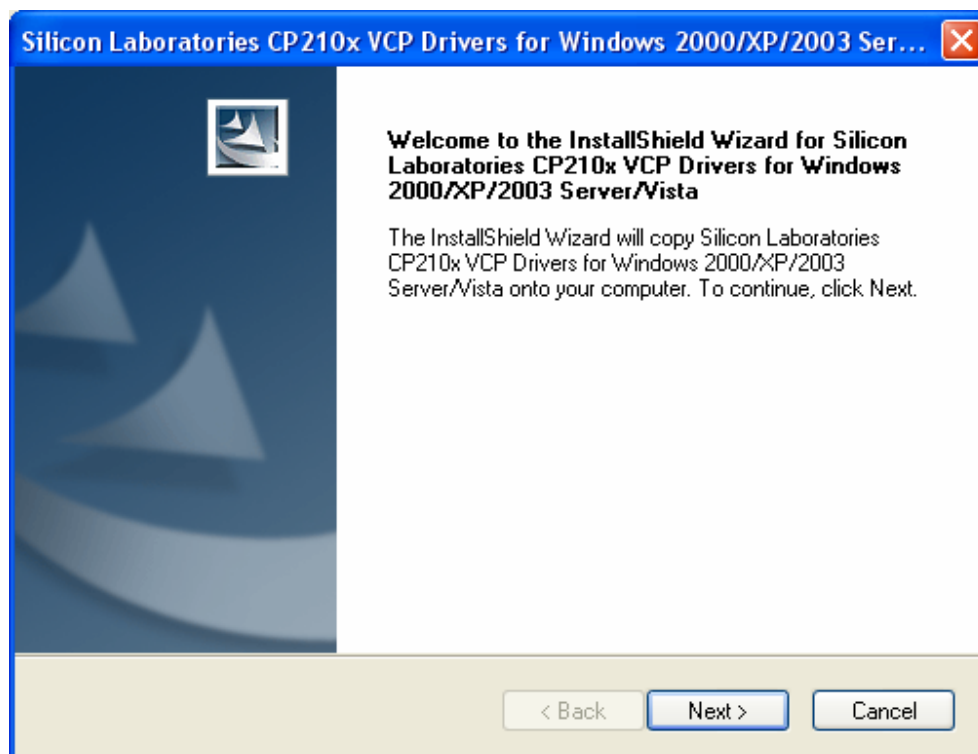
→ [Revision History](#)

Next:

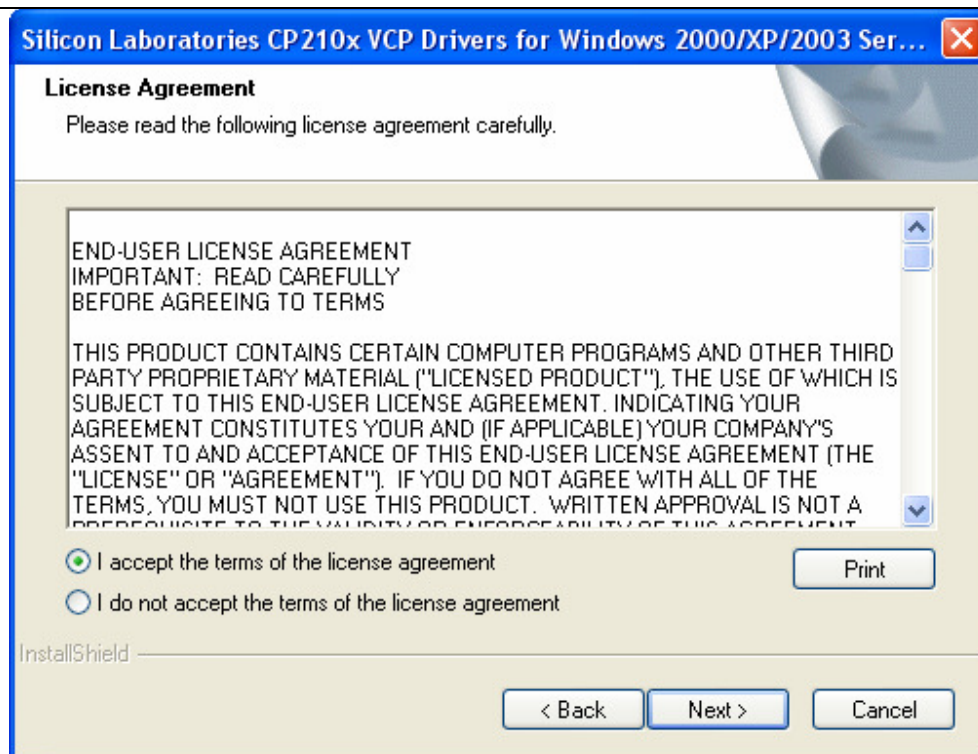
This will launch the driver un-packer utility. You may see the following warning which you may ignore, just click on the run button.



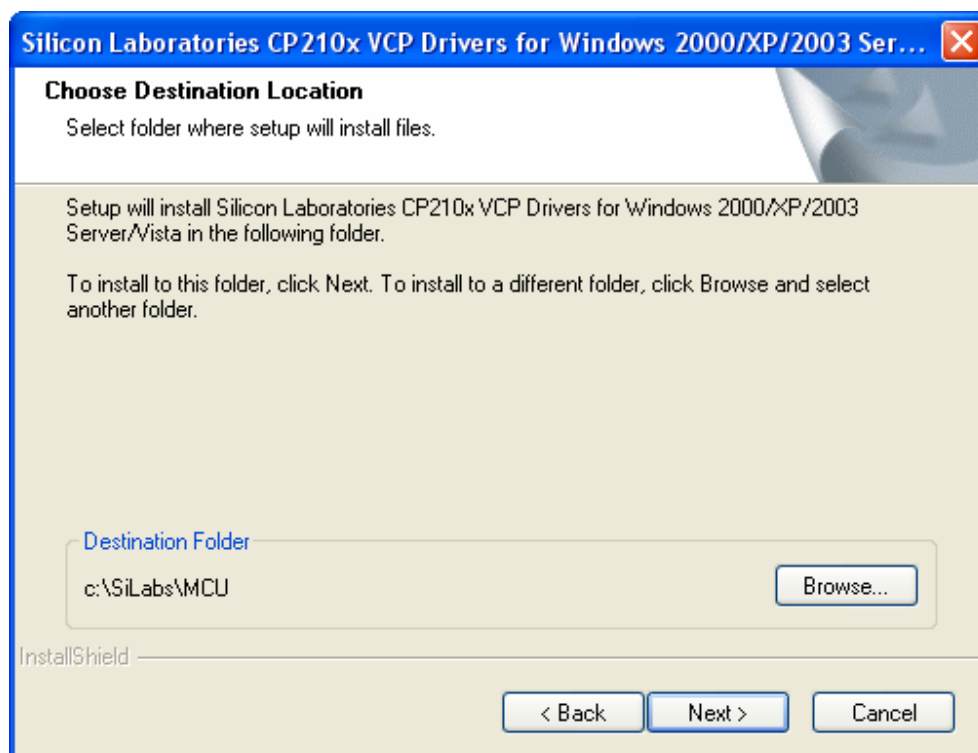
2. The introduction page will appear:



3. Click on next and the following screen will appear:

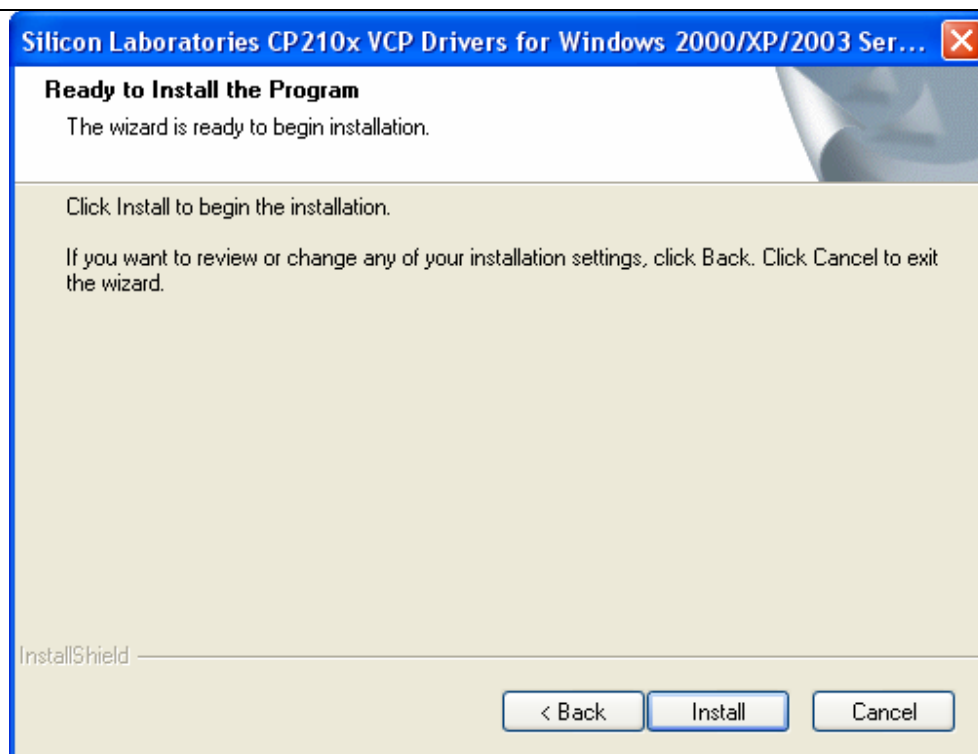


4. Accept the terms of the license agreement and click on next:

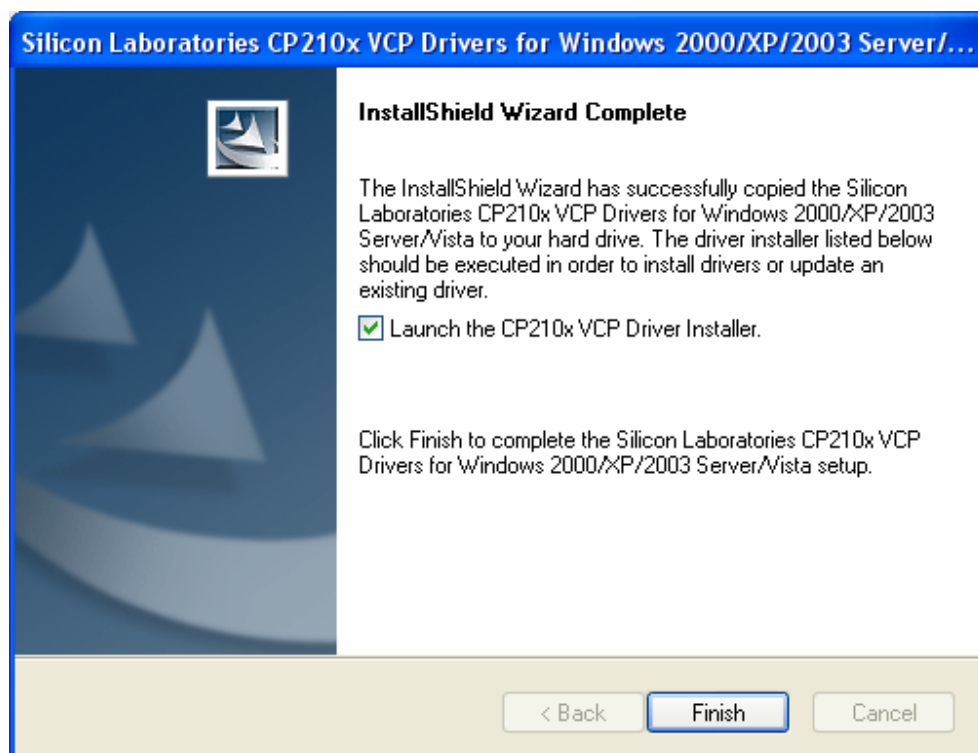


5. Click next or browse to install to a different directory.

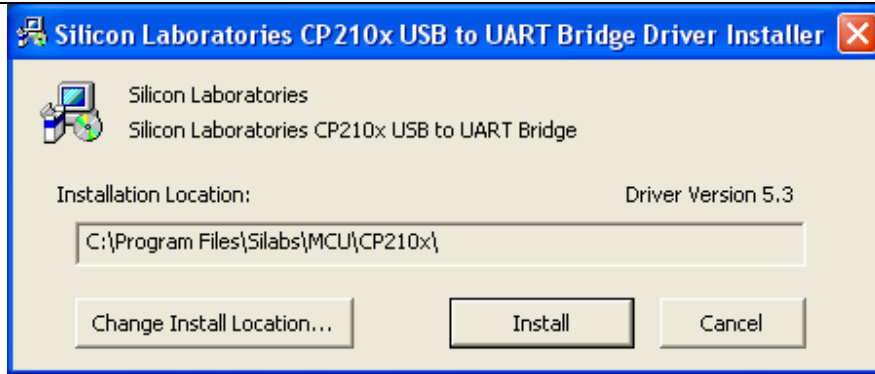
6. Then you will see:



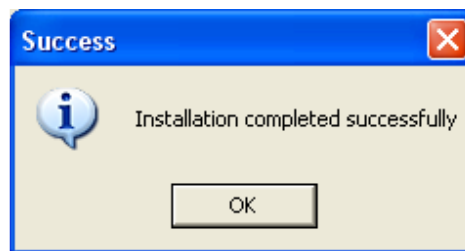
7. Click on install. When the following screen appears, click on the box beside "Launch the CP210x VCP Driver installer" and then click on finish.



8. The following screen will appear.



9. Click on install. The installer will check your system, complete the install and the following screen will appear.



10. You can now attach your USB cable.
11. If you need to find which com port has been chosen there is a utility included which will tell you which one to use after you have connected the USB cable. Run the "Port_Number.exe" program.